

PHILIPS

Monitors



Energy efficiency

with powerful technology

innovation  you



Easy savings

Enable your organizations to **easily reduce energy costs**. As soon as a user is away, the monitor dims its brightness and energy consumption is immediately reduced - each and every time the user is away. This means that as an organization you will **lower your operating costs**. The more employees using the technologies, the bigger the difference.

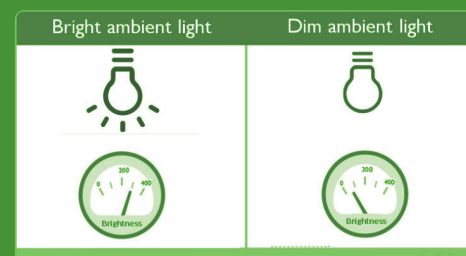
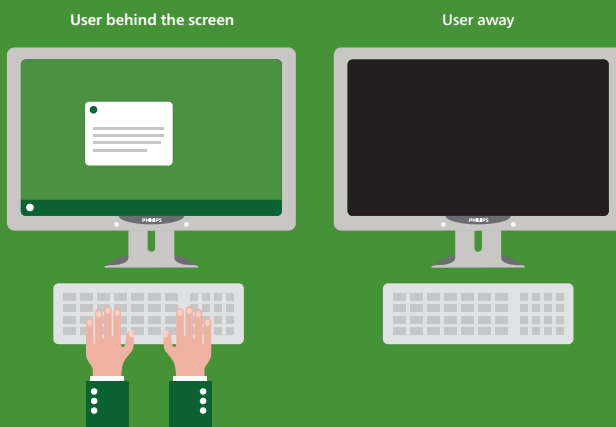
Environmental benefits

In addition to the **easy cost savings**, the PowerSensor, LightSensor and ZeroPower Switch help you to effortlessly take care of the environment:

- CO2 emission is one of the main polluters of the environment. Saving energy with the PowerSensor means actively reducing CO2 emission.
- **High energy efficiency** helps prolong display lifetime, reducing environmental pollution caused by waste.
- The PowerSensor monitor is made from **eco-friendly materials** (leadfree) that meet major international standards.



Technologies



PowerSensor 2

The PowerSensor 2 feature reduces energy consumption by detecting when users move closer and further away from the screen. For example, if the monitor is set to 100% brightness and the user leaves their seat, **the monitor will automatically reduce power consumption by up to 80%**.

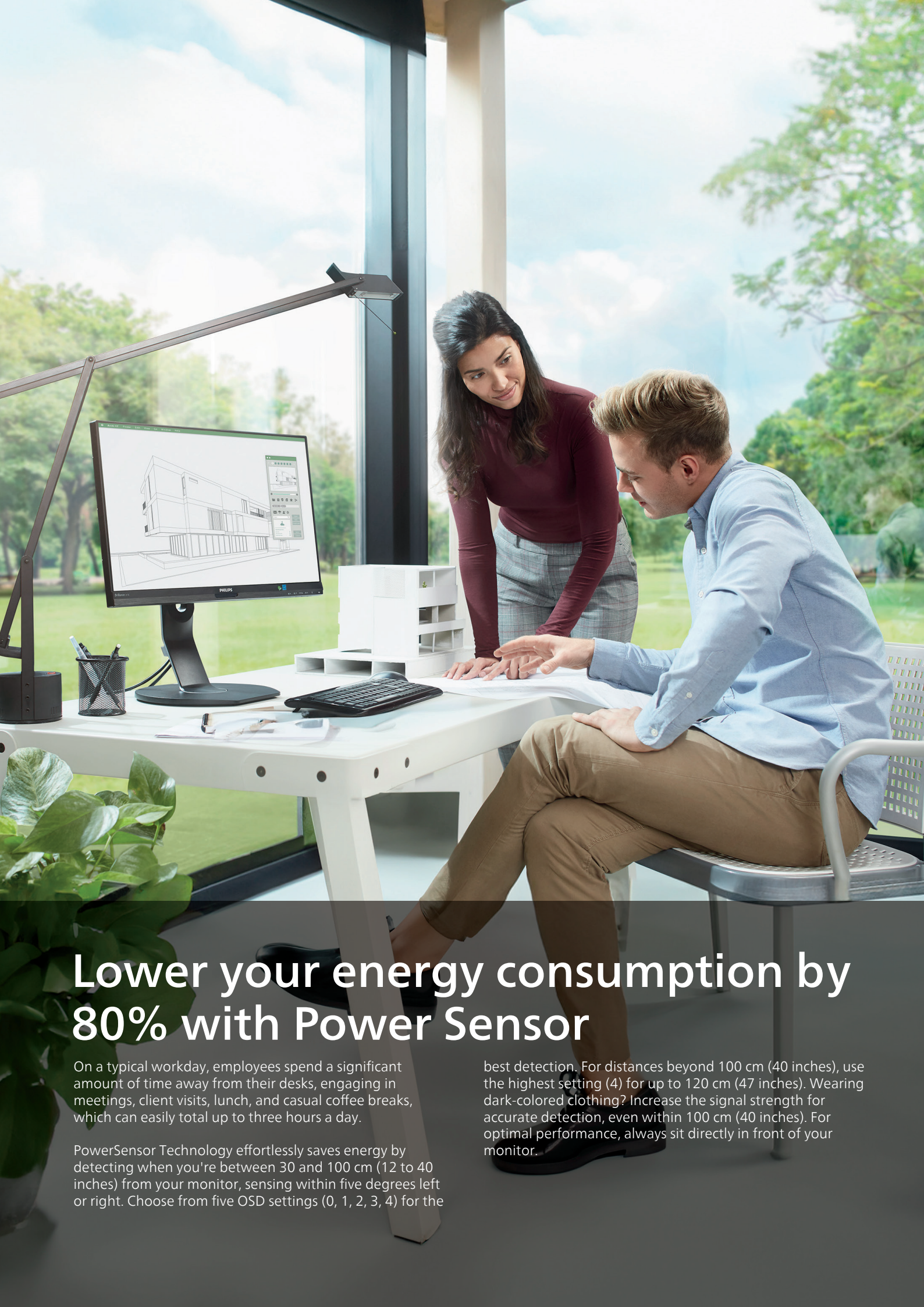
After switching the OSD setting to "User", it is then needed to adjust the settings in Windows 11 for this feature to function properly. When adjustments are made, the monitor and connected PC/laptop will wake when someone approaches it and will sleep when someone walks away, effectively reducing the amount of wake time. The distance for detection can be changed from 50, 75, to 120cm from the user's laptop. Please note that Windows 11 must be installed.

LightSensor

Light Sensor uses a smart sensor to adjust the picture brightness depending on the light conditions in the room for the perfect picture with minimal power usage. When the room lighting is dim, the light sensor **lowers the screen brightness to make it easier on your eyes and simultaneously cuts down on power consumption**.

Zero Power Switch

At the flick of the 0 watt hand switch, which is conveniently located at the back of the monitor, **you can completely cut off your monitor from AC power**. This results in zero power consumption, reducing your carbon footprint even further.



Lower your energy consumption by 80% with Power Sensor

On a typical workday, employees spend a significant amount of time away from their desks, engaging in meetings, client visits, lunch, and casual coffee breaks, which can easily total up to three hours a day.

PowerSensor Technology effortlessly saves energy by detecting when you're between 30 and 100 cm (12 to 40 inches) from your monitor, sensing within five degrees left or right. Choose from five OSD settings (0, 1, 2, 3, 4) for the

best detection. For distances beyond 100 cm (40 inches), use the highest setting (4) for up to 120 cm (47 inches). Wearing dark-colored clothing? Increase the signal strength for accurate detection, even within 100 cm (40 inches). For optimal performance, always sit directly in front of your monitor.



346P1CRH



326P1H

Diagonal	34 "	31,5 "
Panel	VA	IPS
Resolution	3440x1440	2560x1440
Refresh Rate	100Hz	75Hz
Response Time	4	4
PowerSensor/ LightSensor	Power/Light sensor	Power/Light sensor
Sync technology		Adaptive Sync
Webcam	Pop-up 2.0 megapixel FHD camera with microphone and LED indicator	Pop Up Webcam
Speakers	5Wx2	5Wx2
Tilt	-5/25 °	-5/25 °
Pivot	No	-/+ 90 °
Swivel	-180/180 °	-180/180 °
Height Adjustment	180mm	180mm
HDMI	1x 2.0	2x 1.4
Displayport	1x 1.4	1x 1.4
USB hub	Yes	Yes
USB type	1xUSB-C/1xUSB-B/4xUSB 3.2	1x USB-C 3.2/4x USB 3.2
USB downstream port	4	4
USB fast charge	Yes	Yes
USB-C Power Delivery	90W	90W
RJ45	Yes	Yes
Power supply	Internal	Internal
EPEAT	Silver	Silver
TCO	No	9,0
TCO Edge	No	Yes
Energy star (EPA)	EnergyStar 8	EnergyStar 8



329P1H



279P1



328B1

31,5 "	27 "	31,5
IPS	IPS	VA
3840x2160	3840x2160	3840x2160
60Hz	60Hz	60Hz
4	4	4
Power/Light sensor	Power/Light sensor	Power/Light sensor
Adaptive Sync	Adaptive Sync	Adaptive Sync
Pop Up Webcam	No	No
5Wx2	3Wx2	3Wx2
-5/25 °	-5/30 °	-5/30 °
-/+ 90 °	-/+ 90 °	-/+ 90 °
-180/180 °	-180/180 °	-180/180 °
180mm	150mm	180mm
2x 2.0	2x 2.0	2x 2.0
1x 1.4	1x 1.4	1x 1.2
Yes	Yes	Yes
1x USB-C 3.2/4x USB 3.2	USB-C 3.2/4xUSB 3.2	1xUSB-B/4xUSB 3.2
4	4	4
Yes	Yes	Yes
90W	90W	No
Yes	Yes	No
Internal	Internal	Internal
Silver	Gold	No
9,0	9,0	No
Yes	Yes	No
EnergyStar 8	EnergyStar 8	No



45B1U6900CH



45B1U6900C

Diagonal	44,5 "	44,5 "
Panel	VA	VA
Resolution	5120x1440	5120x1440
Refresh Rate	75Hz	75Hz
Response Time	4	4
PowerSensor/ LightSensor	Yes	Yes
Sync technology	Adaptive Sync	Adaptive Sync
Webcam	Pop-up 5.0 megapixel QHD camera with Digital microphone x 2 and LED indicator with noise cancelling	No
Speakers	5Wx2	5Wx2
Tilt	-5/15 °	-5/15 °
Pivot	No	No
Swivel	-45/45 °	-45/45 °
Height Adjustment	150mm	150mm
HDMI	2x 2.0	2x 2.0
Displayport	1x 1.4	1x 1.4
USB hub	Yes	Yes
USB type	USB-C*2 UP/4xUSB-A 3.2+USB-C down	USB-C, USB-B UP/4xUSB-A 3.2+USB-C down
USB downstream port	5	5
USB fast charge	Yes	Yes
USB-C Power Delivery	upstream(100W+15W or 65W+45W)/15W downstream	upstream 100W/15W downstream
RJ45	Yes	Yes
Power supply	Internal	Internal
EPEAT	Silver	Silver
TCO	9,0	9,0
TCO Edge	No	No
Energy star (EPA)	EnergyStar 8	EnergyStar 8



40B1U6903CH



40B1U5601H

40 "	40 "
IPS	IPS
5120x2160	3440x1440
75Hz	100Hz
4	4
Yes	Yes
Adaptive Sync	Adaptive Sync
Pop-up 5.0 megapixel QHD camera with Digital microphone x 2 and LED indicator with noise cancelling	Pop-up 5.0 megapixel QHD camera with Digital microphone x 2 and LED indicator with noise cancelling
5Wx2	5Wx2
-5/15 °	-5/30 °
No	No
-45/45 °	-180/180 °
150mm	150mm
2x 2.0	1x 2.0
1x 1.4	1x 1.4
Yes	Yes
USB-B/4*USB-A 3.2	USB-C*2 UP/4xUSB-A 3.2+USB-C down
6	5
Yes	Yes
upsteam TBT4 90W/downstream TBT4 15W+45W USB-C	upstream(100W+15W or 65W+45W)/15W downstream
Yes	Yes
Internal	Internal
Silver	Silver
9,0	No
Yes	No
EnergyStar 8	EnergyStar 8



40B1U5600



34B1U5600CH

Diagonal	40 "	34 "
Panel	IPS	VA
Resolution	3440x1440	3440x1440
Refresh Rate	100Hz	100Hz
Response Time	4	4
PowerSensor/LightSensor	Yes	Yes
Sync technology	Adaptive Sync	Adaptive Sync
Webcam	No	5.0 megapixel QHD camera with noise cancelation / Pop up webcam
Speakers	5Wx2	5Wx2
Tilt	-5/30 °	-5/25 °
Pivot	No	No
Swivel	-180/180 °	-180/180 °
Height Adjustment	150mm	180mm
HDMI	1x 2.0	1x 2.0
Displayport	1x 1.4	1x 1.4
USB hub	Yes	Yes
USB type	USB-C, USB-B UP/4xUSB-A 3.2+USB-C down	3xUSB-C 3.2 gen2/4xUSB-A 3.2 gen2
USB downstream port	5	5
USB fast charge	Yes	Yes
USB-C Power Delivery	upstream 100W/15W downstream	upstream 100W/downstream 15W
RJ45	No	Yes
Power supply	Internal	Internal
EPEAT	Silver	Silver
TCO	No	9,0
TCO Edge	No	2
Energy star (EPA)	EnergyStar 8	EnergyStar 8



27B1U5601H



24B1U5301H



27B1U7903

27 "	23,8 "	27 "
IPS	IPS	IPS
2560x1440	1920x1080	3840x2160
75Hz	75Hz	60Hz
4	4	4
Power/Light sensor	Power/Light sensor	Power/Light sensor
Adaptive Sync	Adaptive Sync	Adaptive Sync
5.0 megapixel QHD camera with noise cancelation/ Pop up webcam	5.0 megapixel QHD camera with noise cancelation / Pop up webcam	No
5Wx2	5Wx2	3Wx2
-5/30 °	-5/30 °	-5/15 °
-/+ 90 °	-/+ 90 °	-/+ 90 °
-180/180 °	-180/180 °	-45/45 °
150mm	150mm	130mm
1x 1.4	1x 1.4	2x 2.0
1x 1.4	1x 1.4	1x 1.4
Yes	Yes	Yes
3xUSB-C 3.2 gen2/4xUSB-A 3.2 gen2	3xUSB-C 3.2 gen2/4xUSB-A 3.2 gen2	4xUSB- A 3.2 gen2 10GB
5	5	4
Yes	Yes	Yes
upstream 100W/down-stream15W	upstream 90W/down-stream15W	90W up/ 15W down
Yes	Yes	Yes
Internal	Internal	Internal
Gold	Gold	No
9,0	9,0	No
2	2	No
EnergyStar 8	EnergyStar 8	No



272B1G



242B1G

Diagonal	27 "	23,8 "
Panel	IPS	IPS
Resolution	1920x1080	1920x1080
Refresh Rate	75Hz	75Hz
Repsonse Time	4	4
PowerSensor/LightSensor	Power/Light sensor	Power/Light sensor
Sync technology	Adaptive Sync	Adaptive Sync
Webcam	No	No
Speakers	2Wx2	2Wx2
Tilt	-5/35 °	-5/35 °
Pivot	-/+ 90 °	-/+ 90 °
Swivel	-180/180 °	-180/180 °
Height Adjustment	150mm	150mm
HDMI	1x 1.4	1x 1.4
Displayport	1x 1.2	1x 1.2
USB hub	Yes	Yes
USB type	1xUSB-B/4xUSB 3.2	1xUSB-B/4xUSB 3.2
USB downstream port	4	4
USB fast charge	Yes	Yes
USB-C Power Delivery	No	No
RJ45	No	No
Power supply	Internal	Internal
EPEAT	Gold	Gold
TCO	9,0	9,0
TCO Edge	Yes	Yes
Energy star (EPA)	EnergyStar 8	EnergyStar 8



346B1C



345B1C



325B1L

34 "	34 "	31,5 "
VA	VA	IPS
3440x1440	3440x1440	2560x1440
100Hz	100Hz	75Hz
4	5	4
Power/Light sensor	Power/Light sensor	Power/Light sensor
Adaptive Sync	Adaptive Sync	Adaptive Sync
No	No	No
5Wx2	5Wx2	3Wx2
-5/30 °	-5/30 °	-5/30 °
No	No	-/+ 90 °
-180/180 °	-180/180 °	-180/180 °
180mm	180mm	180mm
1x 2.0	2x 2.0	2x 1.4
1x 1.2	1x 1.2	1x 1.2
Yes	Yes	Yes
USB-C 3.2/USB 3.2	1xUSB-B/4xUSB 3.2	1xUSB-B/4xUSB 3.2
4	4	4
Yes	Yes	Yes
90W	No	No
Yes	No	No
Internal	Internal	Internal
Silver	Silver	No
9,0	9,0	No
No	No	No
EnergyStar 8	EnergyStar 8	No



276B1JH



275B1H

	Diagonal	27 "	27 "
	Panel	IPS	IPS
	Resolution	2560x1440	2560x1440
	Refresh Rate	75Hz	75Hz
	Repsonse Time	4	4
	PowerSensor/LightSensor	Power/Light sensor	Power/Light sensor
	Sync technology	No	Adaptive Sync
	Webcam	Pop-up 2.0 megapixel FHD camera with microphone and LED indicator	Pop-up 2.0 megapixel FHD camera with microphone and LED indicator
	Speakers	3Wx2	3Wx2
	Tilt	-5/35 °	-5/30 °
	Pivot	-/+ 90 °	-/+ 90 °
	Swivel	-180/180 °	-180/180 °
	Height Adjustment	150mm	150mm
	HDMI	1x 1.4	1x 1.4
	Displayport	1x 1.4	1x 1.2
	USB hub	Yes	Yes
	USB type	USB-C 3.2/USB 3.2/Display Link	1xUSB-B/3xUSB 3.2
	USB downstream port	4	3
	USB fast charge	Yes	Yes
	USB-C Power Delivery	100W (85W+15W)	No
	RJ45	Yes	No
	Power supply	Internal+DC-out	Internal
	EPEAT	Gold	Gold
	TCO	9,0	9,0
	TCO Edge	Yes	Yes
	Energy star (EPA)	EnergyStar 8	EnergyStar 8



278B1



276B1



275B1

27 "	27 "	27 "
IPS	IPS	IPS
3840x2160	2560x1440	2560x1440
60Hz	75Hz	75Hz
4	4	4
Power/Light sensor	Power/Light sensor	Power/Light sensor
Adaptive Sync	Adaptive Sync	Adaptive Sync
No	No	No
2Wx2	2Wx2	2Wx2
-5/35 °	-5/35 °	-5/35 °
-/+ 90 °	-/+ 90 °	-/+ 90 °
-180/180 °	-180/180 °	-180/180 °
150mm	150mm	150mm
2x 2.0	2x 1.4	1x 1.4
1x 1.2	1x 1.4	1x 1.2
Yes	Yes	Yes
1xUSB-B/4xUSB 3.2	USB-C 3.2/4xUSB 3.2	1xUSB-B/4xUSB 3.2
4	4	4
Yes	Yes	Yes
No	90W	No
No	yes	No
Internal	Internal	Internal
Gold	Gold	Gold
9,0	9,0	9,0
Yes	Yes	Yes
EnergyStar 8	EnergyStar 8	EnergyStar 8

**243B1JH****243B1**

	Diagonal	23,8 "	23,8 "
	Panel	IPS	IPS
	Resolution	1920x1080	1920x1080
	Refresh Rate	75Hz	75Hz
	Repsonse Time	4	4
	PowerSensor/LightSensor	Power/Light sensor	Power/Light sensor
	Sync technology	No	Adaptive Sync
	Webcam	Pop-up 2.0 megapixel FHD camera with microphone and LED indicator	No
	Speakers	3Wx2	2Wx2
	Tilt	-5/35 °	-5/35 °
	Pivot	-/+ 90 °	-/+ 90 °
	Swivel	-180/180 °	-180/180 °
	Height Adjustment	150mm	150mm
	HDMI	1x 1.4	1x 1.4
	Displayport	1x 1.4	1x 1.4
	USB hub	Yes	Yes
	USB type	USB-C 3.2/USB 3.2/Display Link	USB-C 3.2/4xUSB 3.2
	USB downstream port	4	4
	USB fast charge	Yes	Yes
	USB-C Power Delivery	100W (85W+15W)	90W
	RJ45	Yes	Yes
	Power supply	External+DC-out	Internal
	EPEAT	Silver	Gold
	TCO	9,0	9,0
	TCO Edge	Yes	Yes
	Energy star (EPA)	EnergyStar 8	EnergyStar 8



242B1H



242B1



245B1

23,8 "	23,8 "	23,8 "
IPS	IPS	IPS
1920x1080	1920x1080	2560x1440
75Hz	75Hz	75Hz
4	4	4
Power/Light sensor	Power/Light sensor	Power/Light sensor
Adaptive Sync	Adaptive Sync	Adaptive Sync
Pop-up 2.0 megapixel FHD camera with microphone and LED indicator	No	No
2Wx2	2Wx2	2Wx2
-5/30 °	-5/35 °	-5/35 °
-/+ 90 °	-/+ 90 °	-/+ 90 °
-180/180 °	-180/180 °	-180/180 °
150mm	150mm	150mm
1x 1.4	1x 1.4	1x 1.4
1x 1.2	1x 1.2	1x 1.2
Yes	Yes	Yes
1xUSB-B/3xUSB 3.2	1xUSB-B/4xUSB 3.2	1xUSB-B/4xUSB 3.2
3	4	4
Yes	Yes	Yes
No	No	No
No	No	No
Internal	Internal	Internal
Gold	Gold	Gold
9,0	9,0	9,0
Yes	Yes	Yes
EnergyStar 8	EnergyStar 8	EnergyStar 8



49B2U6903CH



49B2U6900CH

Diagonal	48,8 "	48,8 "
Panel	VA	VA
Resolution	5120x1440	5120x1440
Refresh Rate	120Hz	75Hz
Response Time	4	4
PowerSensor/Light-Sensor	Yes and ToF sensor for WOL and WAL	Yes
Sync technology	Adaptive Sync	Adaptive Sync
Webcam	Pop-up 5.0 megapixel camera with microphone and LED indicator, Noise cancelling, Auto Framing, BusyLight	Pop-up 5.0 megapixel camera with microphone and LED indicator, Noise cancelling, Auto Framing, BusyLight
Speakers	5Wx2	5Wx2
Tilt	-5/15 °	-5/15 °
Pivot	No	No
Swivel	-30/30 °	-30/30 °
Height Adjustment	170mm	150mm
HDMI	2x 2.0	2x 2.0
Displayport	1x 1.4	1x 1.4
USB hub	Yes	Yes
USB type	upstream(bottom side): TBT4 in x1 / USB-C1 x1 USB3.2, Gen2, 10G Down Stream: bottom side (USB-Ax2), TBT4-out side (USB-Ax2, USB-C2x1 for data,PD45W only) USB3.2, Gen2 10G	"Upstream:2x USB-C1(DP-Alt./PD/ Data)) Downstream: USB-C (data/PD)/4x-USB-A"
USB downstream port	6	5
USB fast charge	Yes	Yes
USB-C Power Delivery	TBT4 in PD96W typical, PD100W max / TBT4 out PD15W / USB-C2 downstream PD45W	Upstream: up to USB-C1/C2: 100W max (96W typical or 65W/45W downstream: USB-C3 15W
RJ45	2.5G	2.5G
Power supply	Internal	Internal
EPEAT	Silver	Silver
TCO	9,0	9,0
TCO Edge	Yes	Yes
Energy star (EPA)	EnergyStar 8	EnergyStar 8



49B2U5900CH



276B9

48,8 "	27 "
VA	IPS
5120x1440	2560x1440
75Hz	75Hz
4	4
Yes	Powersensor
Adaptive Sync	Adaptive Sync
Pop-up 5.0 megapixel camera with microphone and LED indicator, BusyLight	No
3Wx2	2Wx2
-5/15 °	-5/30 °
No	-/+ 90 °
-30/30 °	-175/175 °
150mm	150mm
2x 2.0	1x 1.4
1x 1.4	1x 1.2
Yes	Yes
Upstream: USB-C1(DP-Alt./PD/Data))/USB-B Downstream: USB-C (data/PD)/2xUSB-A	1x USB-C 3.2/4x USB 3.2
3	4
Yes	Yes
Upstream: up to USB-C1 100W max (96W typical) downstream: USB-C2 15W	65W
1G	No
Internal	Internal
Silver	Gold
9,0	9,0
Yes	Yes
EnergyStar8	EnergyStar 8



240B9



252B9

Diagonal	24 "	25 "
Panel	IPS	IPS
Resolution	1920x1200	1920x1200
Refresh Rate	75Hz	60Hz
Response Time	4	5
PowerSensor/Light-Sensor	Powersensor	Powersensor
Sync technology	Adaptive Sync	Adaptive Sync
Webcam	No	No
Speakers	2Wx2	2Wx2
Tilt	-5/30 °	-5/30 °
Pivot	-/+ 90 °	-/+ 90 °
Swivel	-175/175 °	-175/175 °
Height Adjustment	150mm	150mm
HDMI	1x 1.4	1x 1.4
Displayport	1x 1.2	1x 1.2
USB hub	Yes	Yes
USB type	USB 3.2	USB 3.1
USB downstream port	4	4
USB fast charge	Yes	Yes
USB-C Power Delivery	No	No
RJ45	No	No
Power supply	Internal	Internal
EPEAT	Silver	Gold
TCO	9,0	9,0
TCO Edge	Yes	Yes
Energy star (EPA)	EnergyStar 8	EnergyStar 8

